

# ULTIMATE

A circular icon representing a water cycle, with three arrows in yellow, green, and blue forming a loop.

WATER SMART INDUSTRIAL SYMBIOSIS

## CS7 – Tain (Glenmorangie distillery)



Meeting: November, 25th 2020



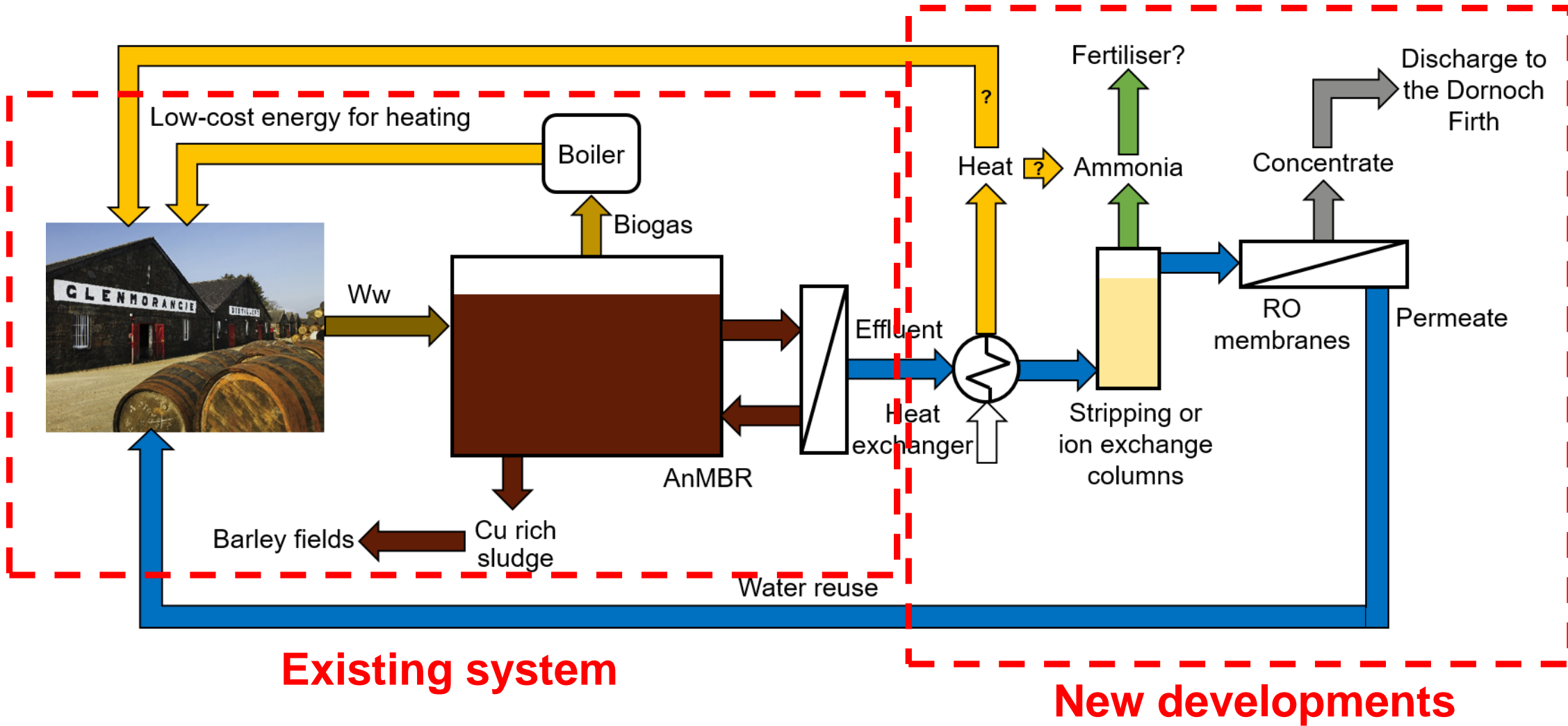


# CS7





# Treatment systems



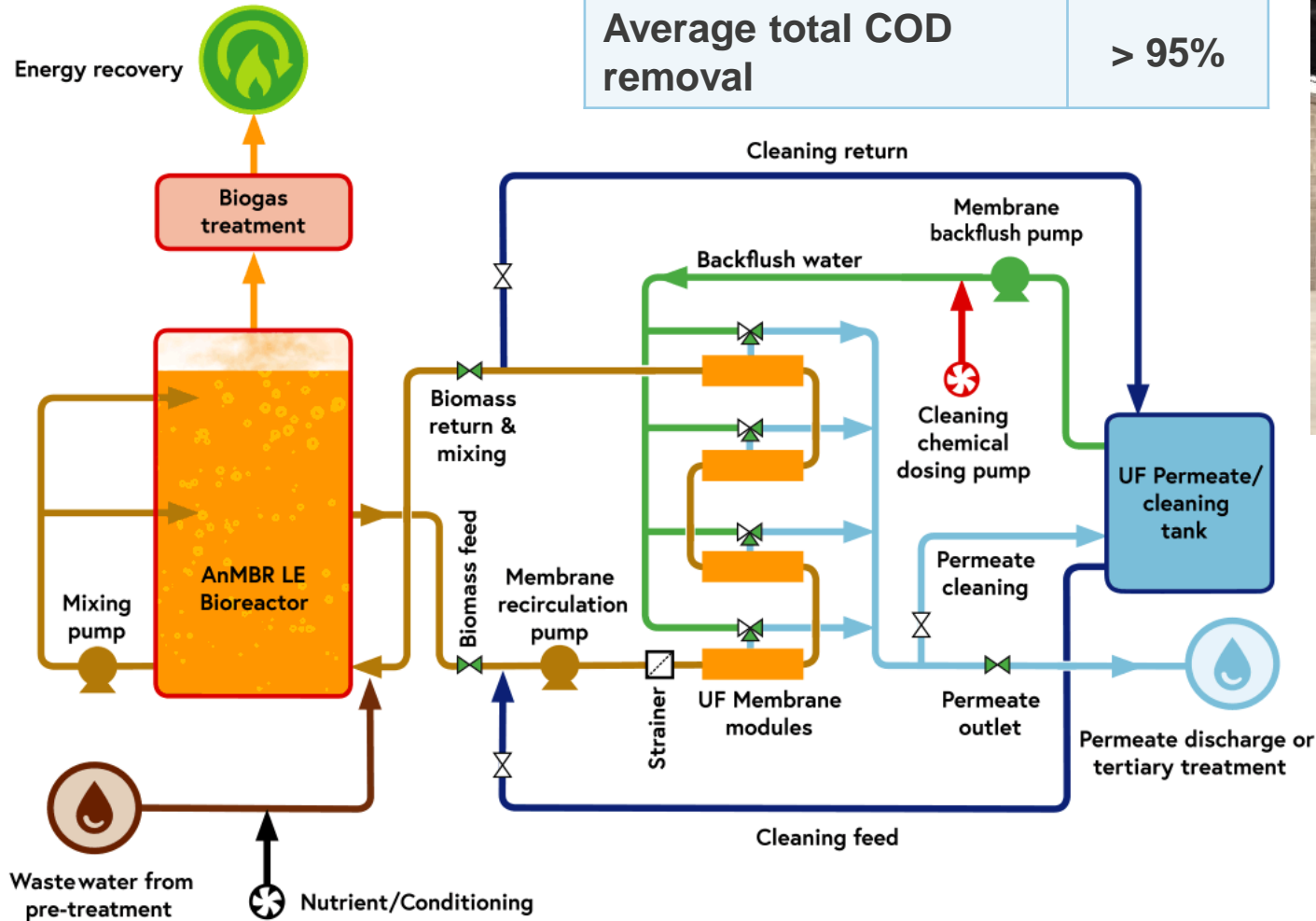




# AnMBR LE™



Peak/average AnMBR Feed flow rate (m <sup>3</sup> /d)	467/377
Design COD load (kg/d)	14,527
Average total COD removal	> 95%

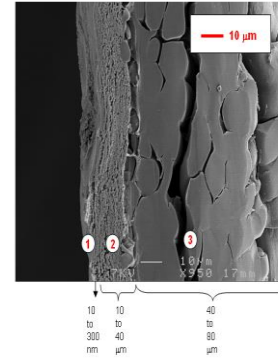
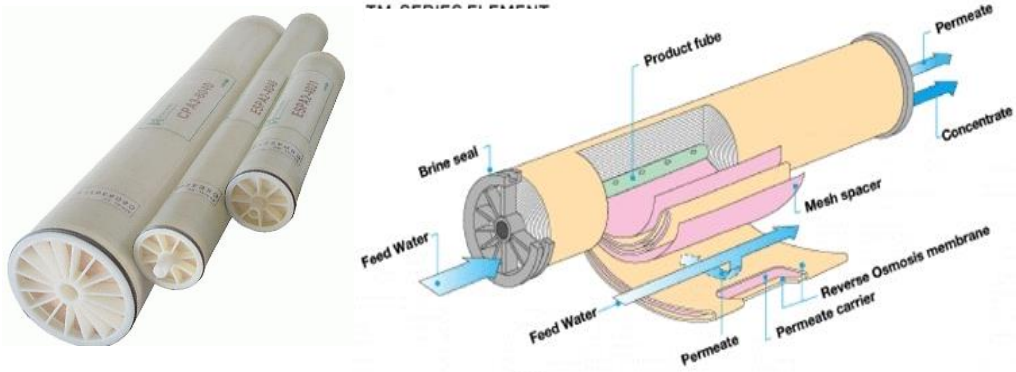


COD (mg/L)	656 (316 – 1454)
SS (mg/L)	3 (0 – 18)
NH <sub>4</sub> -N (mg/L)	797 (329 – 1349)
NO <sub>3</sub> -N (mg/L)	5 (4 – 8)
PO <sub>4</sub> -P (mg/L)	252 (152 – 343)
pH	7.2 (6.4 – 8.0)

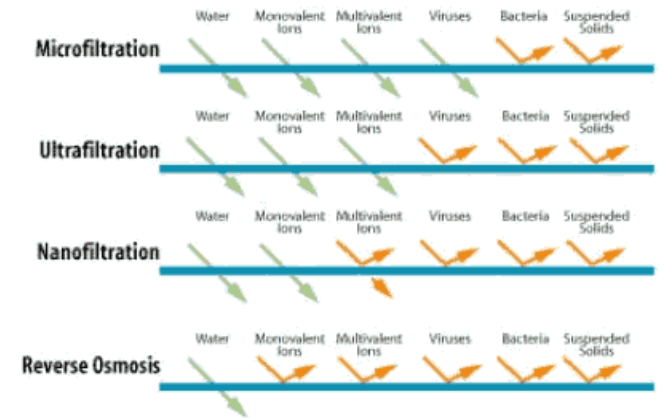
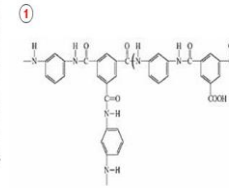




# Reverse osmosis



- ① Polyamide (PA)
- ② Poly (ether sulfone) (PES)
- ③ Polyester



## Demonstration of the application:

- Operational performance
- Treatment performance (fit for purpose)
- System integration

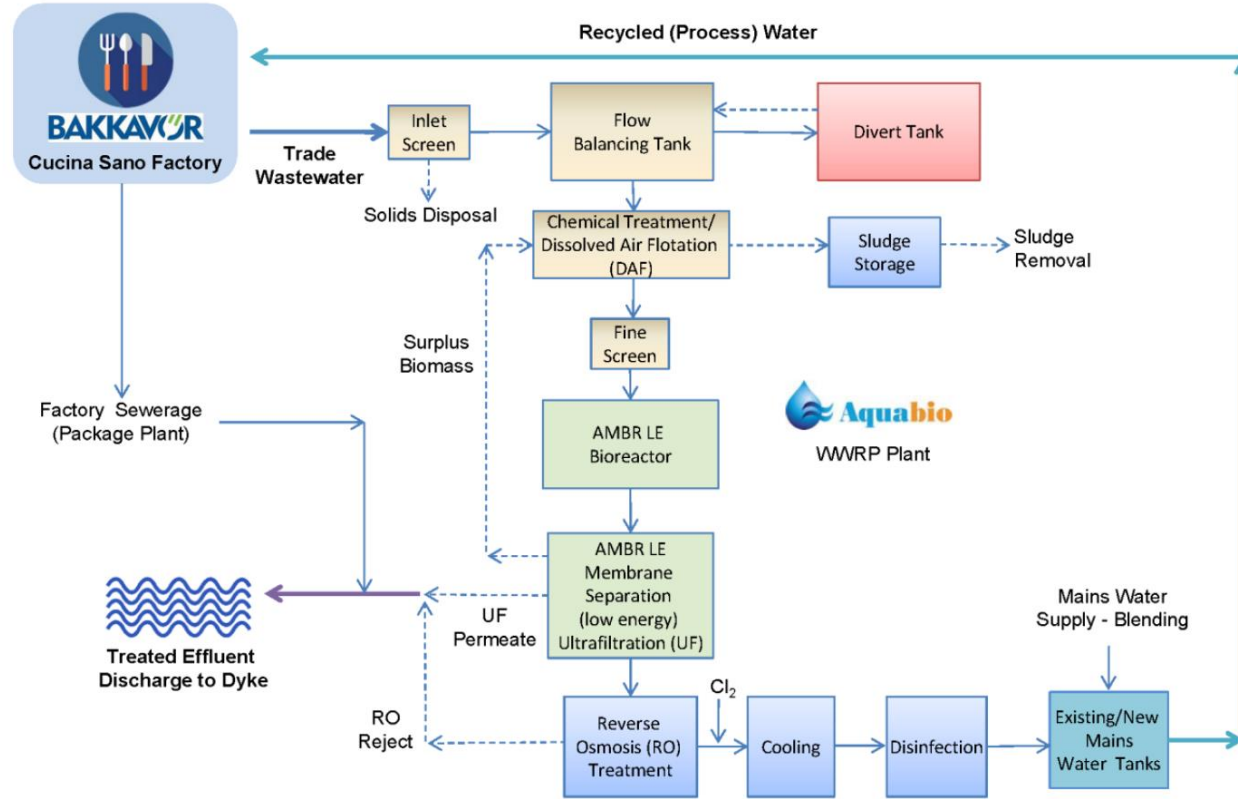






# Previous experience – food processing

## Bakkavor Cucina Sano WWRP Scheme, Boston, Lincolnshire, United Kingdom



Average AeMBR flow rate (m <sup>3</sup> /d)	500
Average COD load (kg/d)	3566
Average RO permeate flow rate (m <sup>3</sup> /d)	425
Total water recovery for reuse	75-80%



The project leading to this application has received funding from the European Union's Horizon 2020 research and innovation programme under grant agreement No 869318



**ULTIMATE**



**WATER SMART INDUSTRIAL SYMBIOSIS**

**Thank you!**