



ESNI CONFERENCE

20 September 2023

ULTIMATE Case Study 2

***Nutrient Concentration for Recovery from Greenhouse
Wastewater by Electrodialysis***

Joep van den Broeke, Tavishi Guleria

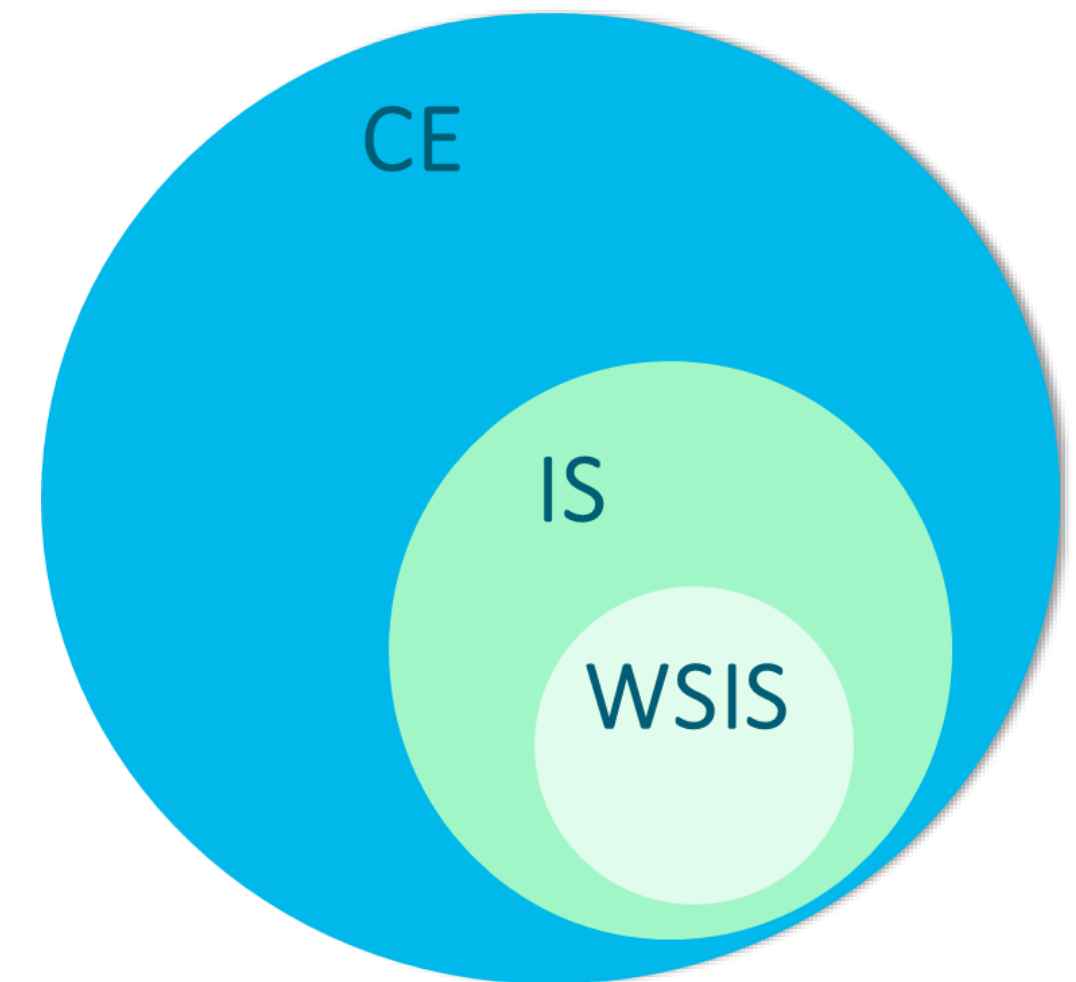
KWR Water Research Institute

Starting with some definitions

Circular Economy (CE) aims to design waste and pollution management with new value chains, by keeping products and materials in re-use and regenerating natural systems (*Ellen MacArthur Foundation*)

Industrial Symbiosis (IS) aims in bringing together companies from different industrial sectors in order to improve the resource efficiency and sustainability by sharing and reusing resources (*NISP UK*).

Water Smart Industrial Symbiosis (WSIS) aims to create economic value and increased sustainability by introducing circular symbiotic arrangements between industry and water service providers (*ULTIMATE*).



Success factors for circular transitions



ULTIMATE project

Develop, optimize, and demonstrate Water-Smart Industrial Symbiosis technologies and solutions for:

- **Water reclamation and reuse** (recovery, refining, and reuse of municipal and industrial wastewater)
- **Exploitation of energy and heat** (extraction of energy, combined water-energy management, water enabled heat transfer, storage and recovery of heat)
- **Nutrient and material recovery/reuse** (nutrient mining, extraction/reuse of high-added value exploitable compounds)



Recover, refine and reuse
wastewater,



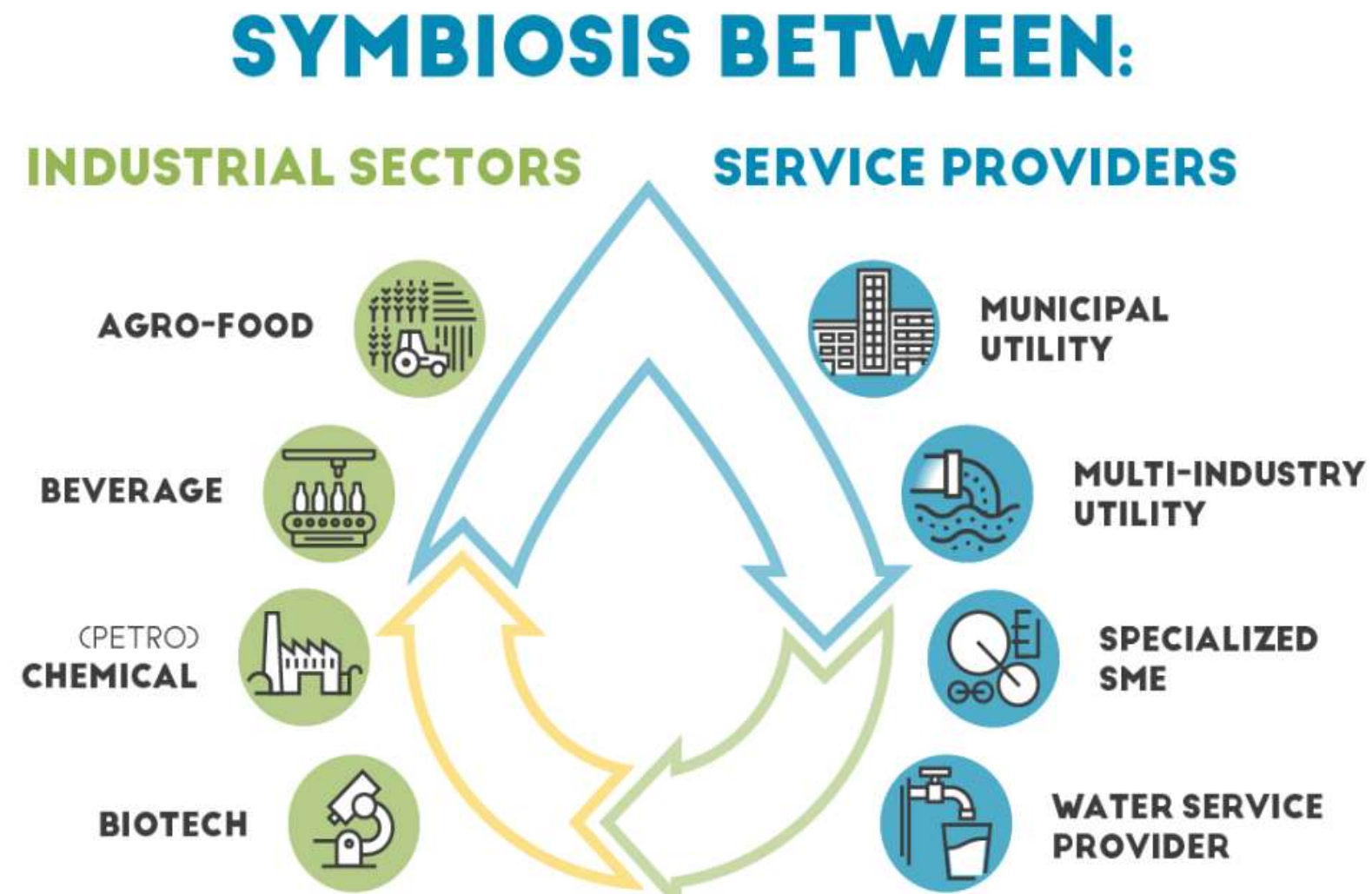
Extract and exploit energy



Extract and exploit materials

Collect and publish
information and experience
with technologies in a
**Technology Evidence
Base**

The project core – integrated case studies



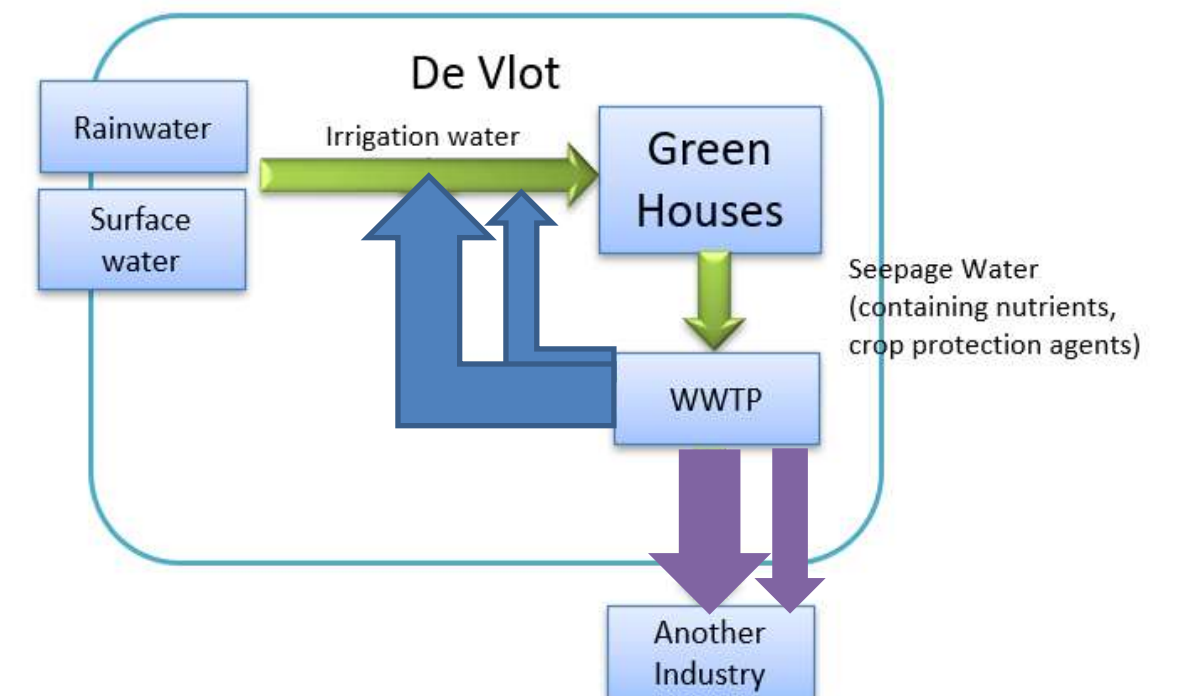
CS2 - Greenhouse Horticulture

- The Netherlands is the second largest exporter of agriculture products (large share from greenhouse horticulture)
- High resource efficiency & production rates – advanced sector!
- Challenges – water scarcity (alternative sources), restrictions in concentrate disposal, strict legislation for effluent quality

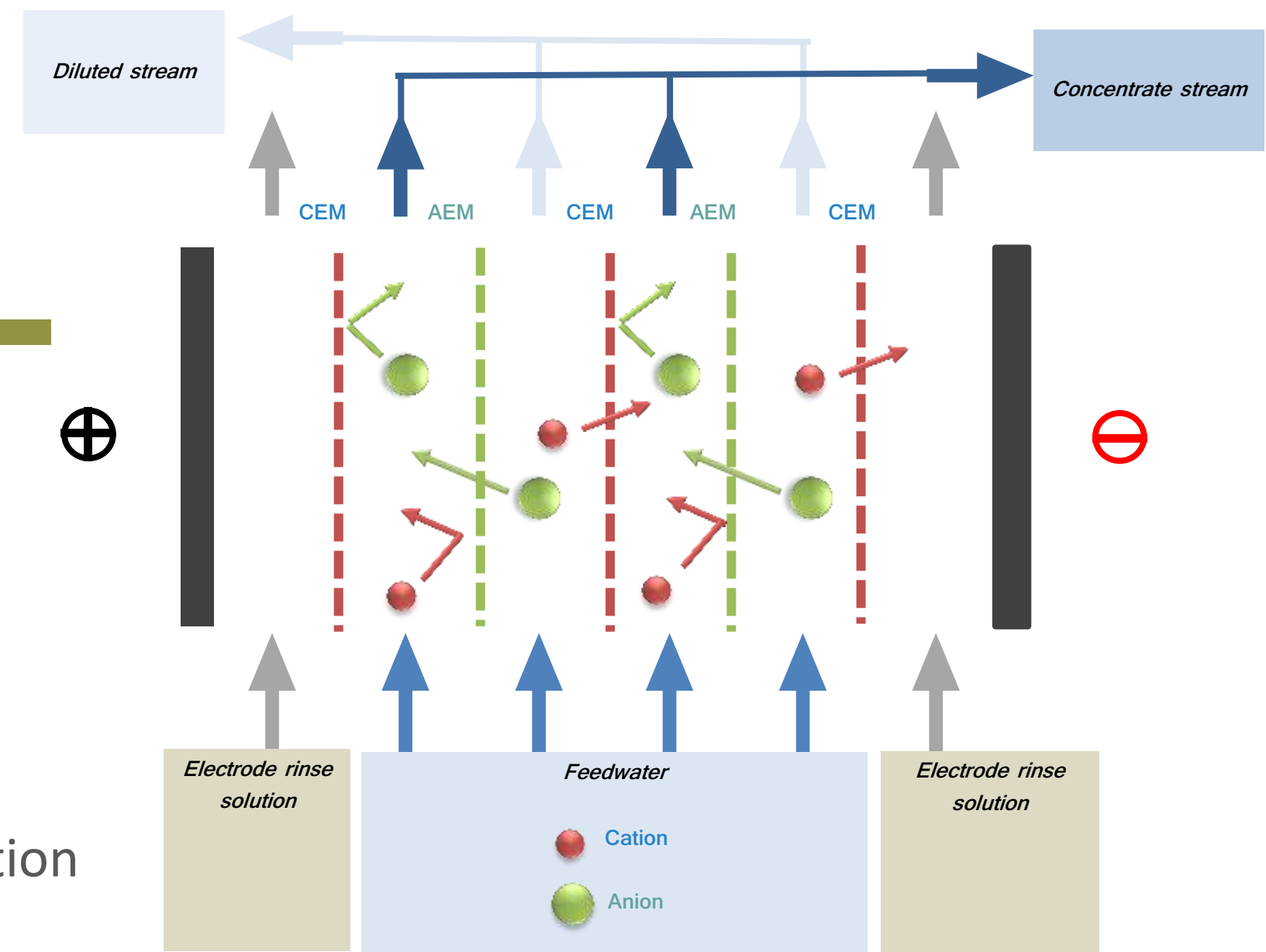


Status quo & proposed treatment

- Coöperatieve Tuinbouw Water Zuivering de Vlot
- 60 greenhouses (160 ha) with a collective treatment facility at a maximum capacity of 40-60 m³/h
- Currently, the treatment is linear with discharge into the sewer
- Proposed treatment is circular to enable irrigation water and fertilizer reuse (Sodium removal, Recovery/reuse of valuable fertilizers)



Electrodialysis



Why of ED (compared to SOTA)?

- Potential for ion-selective recovery
- Tunable production
 - Prevent sodium accumulation in effluent prior to recirculation
 - Ion concentration
 - Fits the needs of greenhouse horticulture

Challenges

- Process optimization for nutrient recovery

Source	NH ₄ ⁺ (mg/L)	K ⁺ (mg/L)	Na ⁺ (mg/L)	Ca ²⁺ (mg/L)	Mg ²⁺ (mg/L)	NO ₃ ⁻ (mg/L)	Cl ⁻ (mg/L)	SO ₄ ²⁻ (mg/L)	H ₂ PO ₄ ⁻ (mg/L)	EC mS/cm	pH
De Vlot	2,16	73,70	162,09	195,74	52,21	215,52	271,21	211,90	3,95	1,9	7,3
Voogt 2009	8,51	273,7	138	320	85,06	1054,08	212,71	576,36	67,89	3	5,5

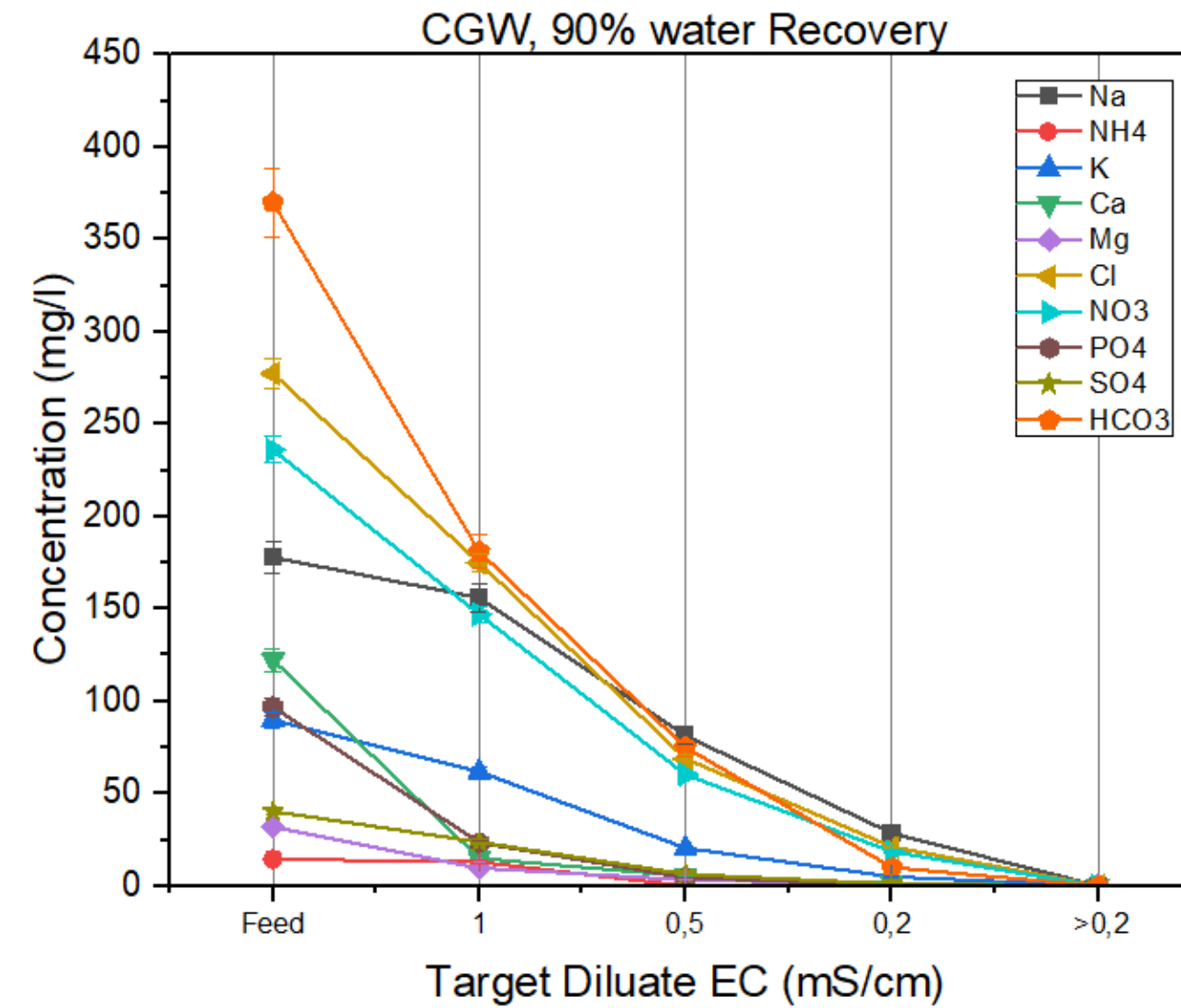
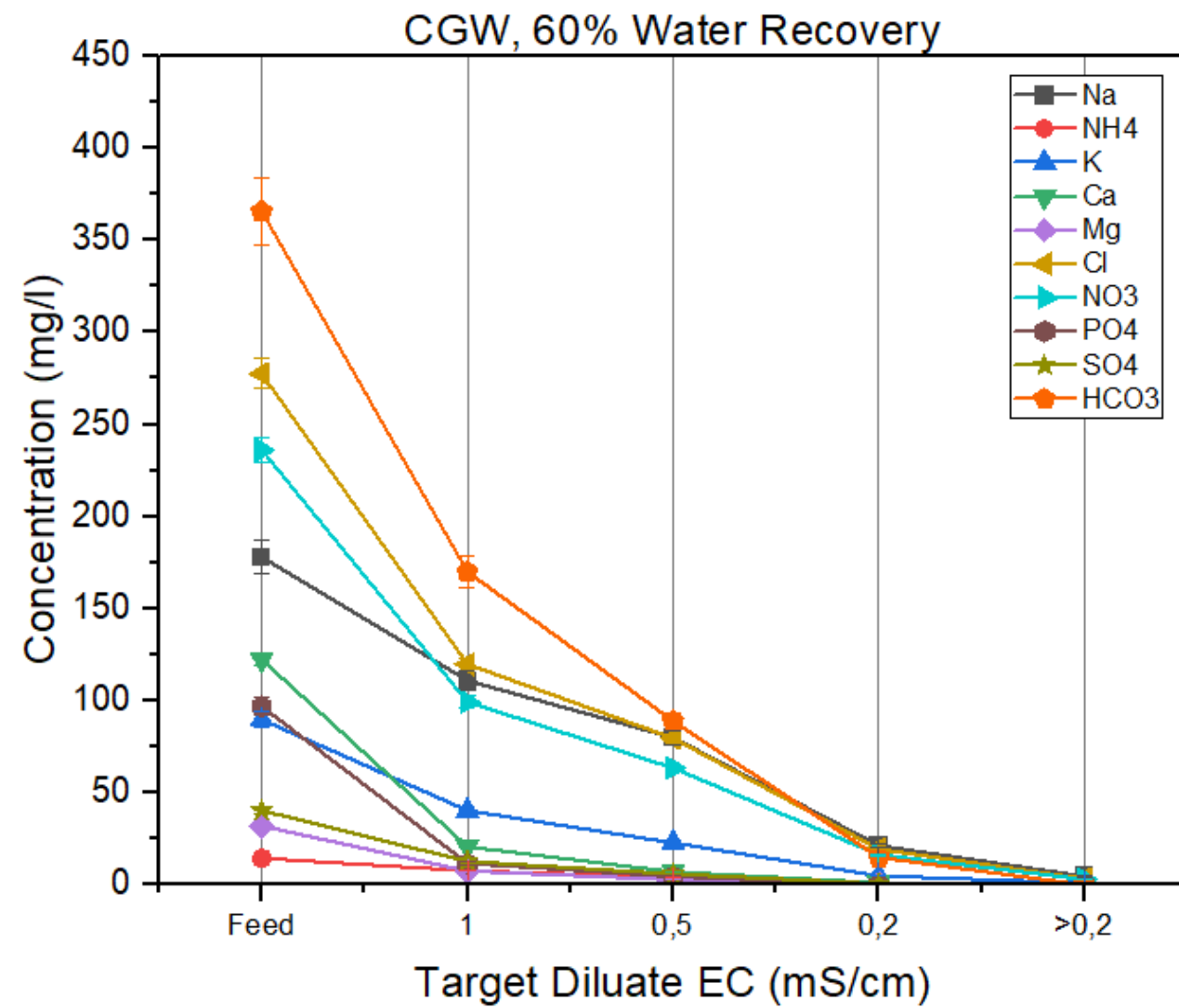
Electrodialysis set-up

Main Parameters:

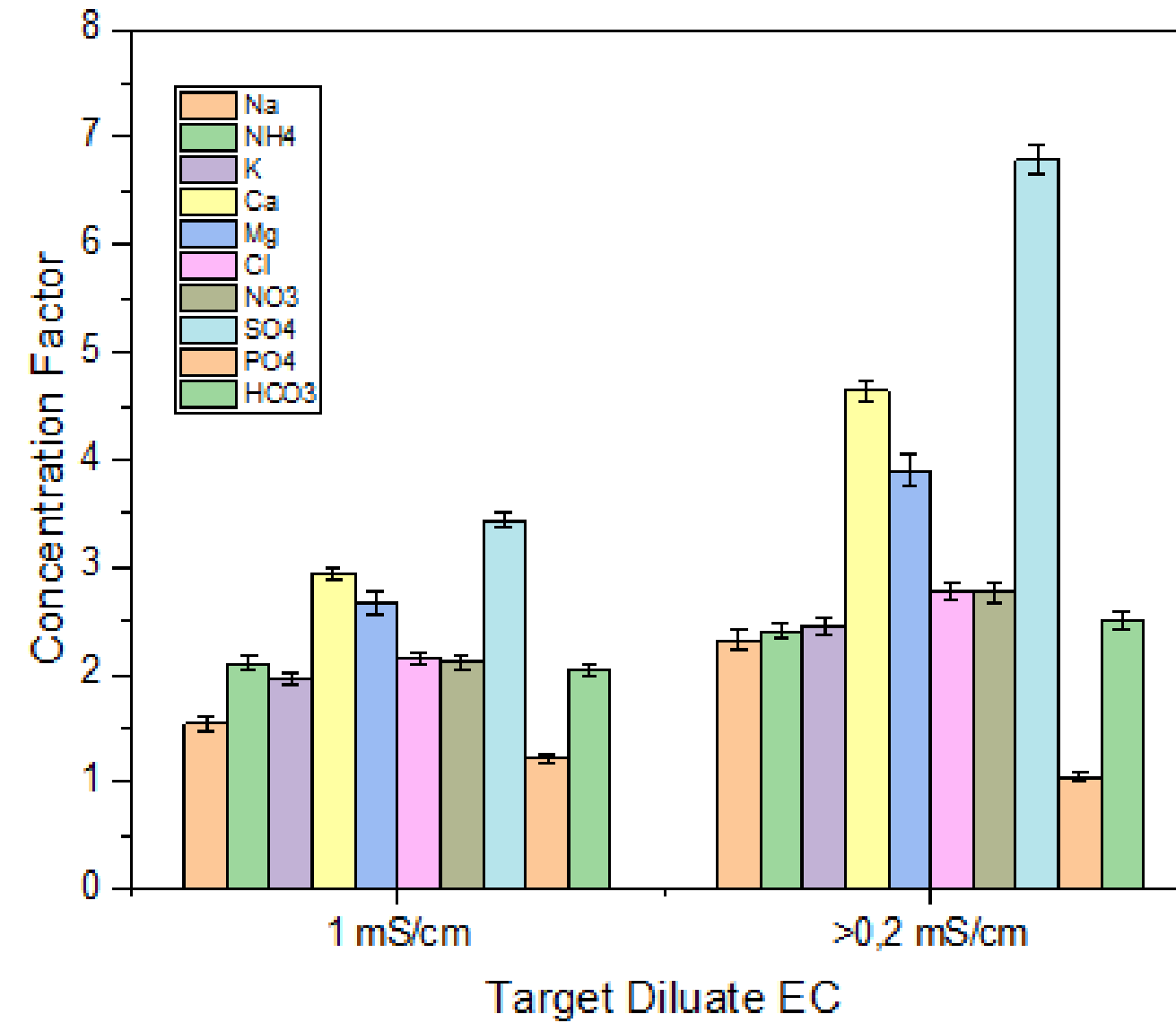
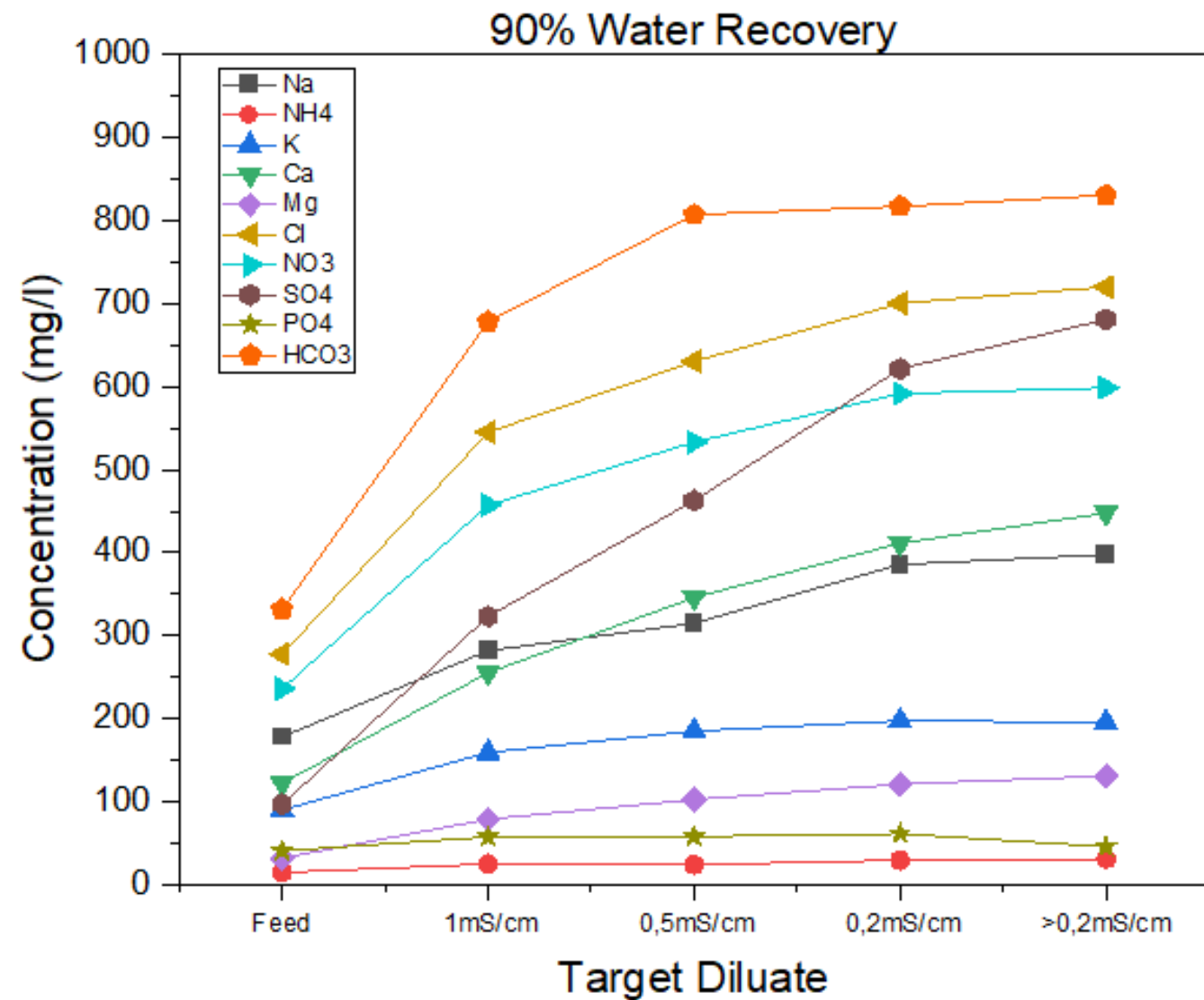
- 10 – 20 cell pairs (scalable)
- Membrane area 0.01 m²
- Fujifilm Type 10 IEMs
- Batch and one-pass



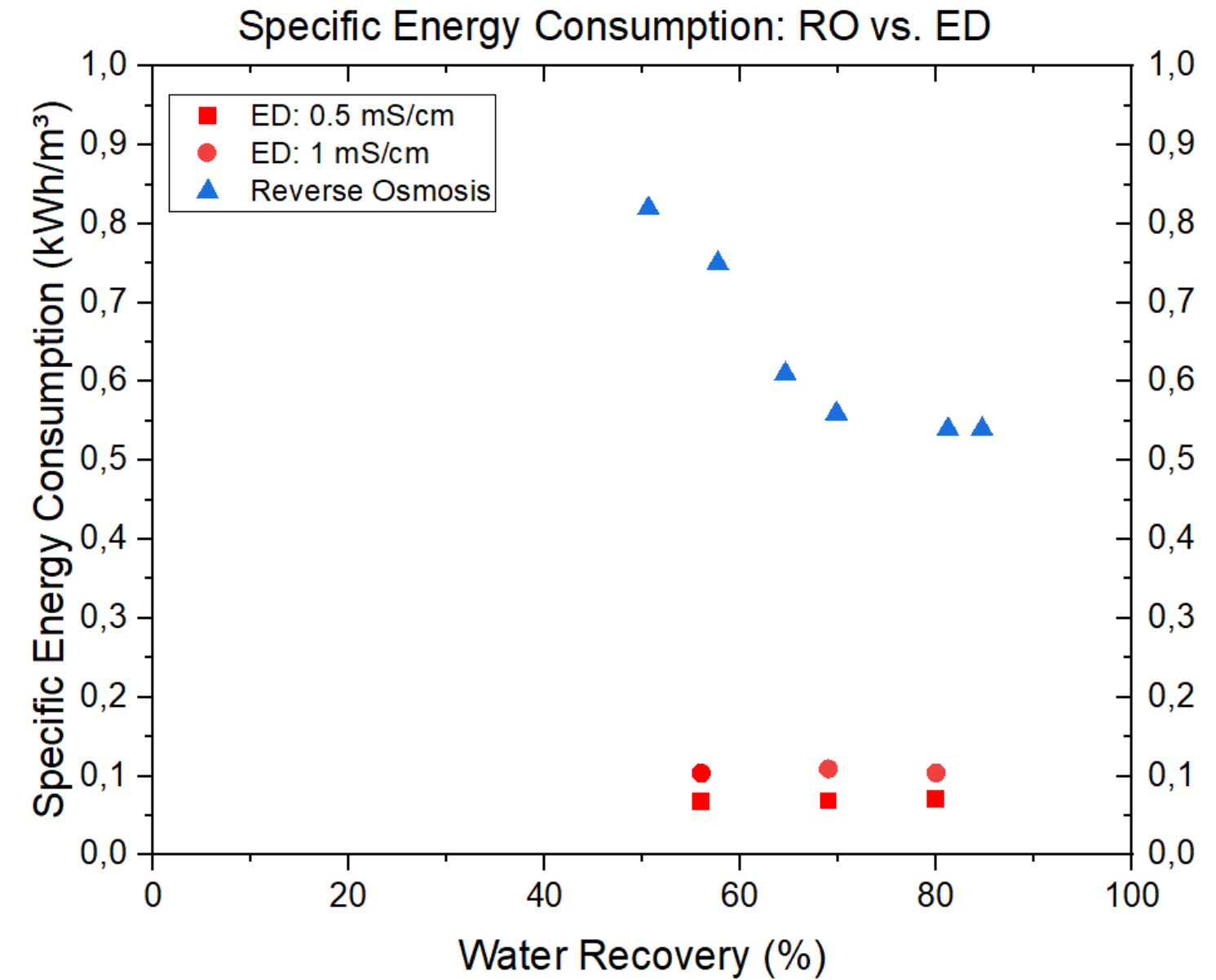
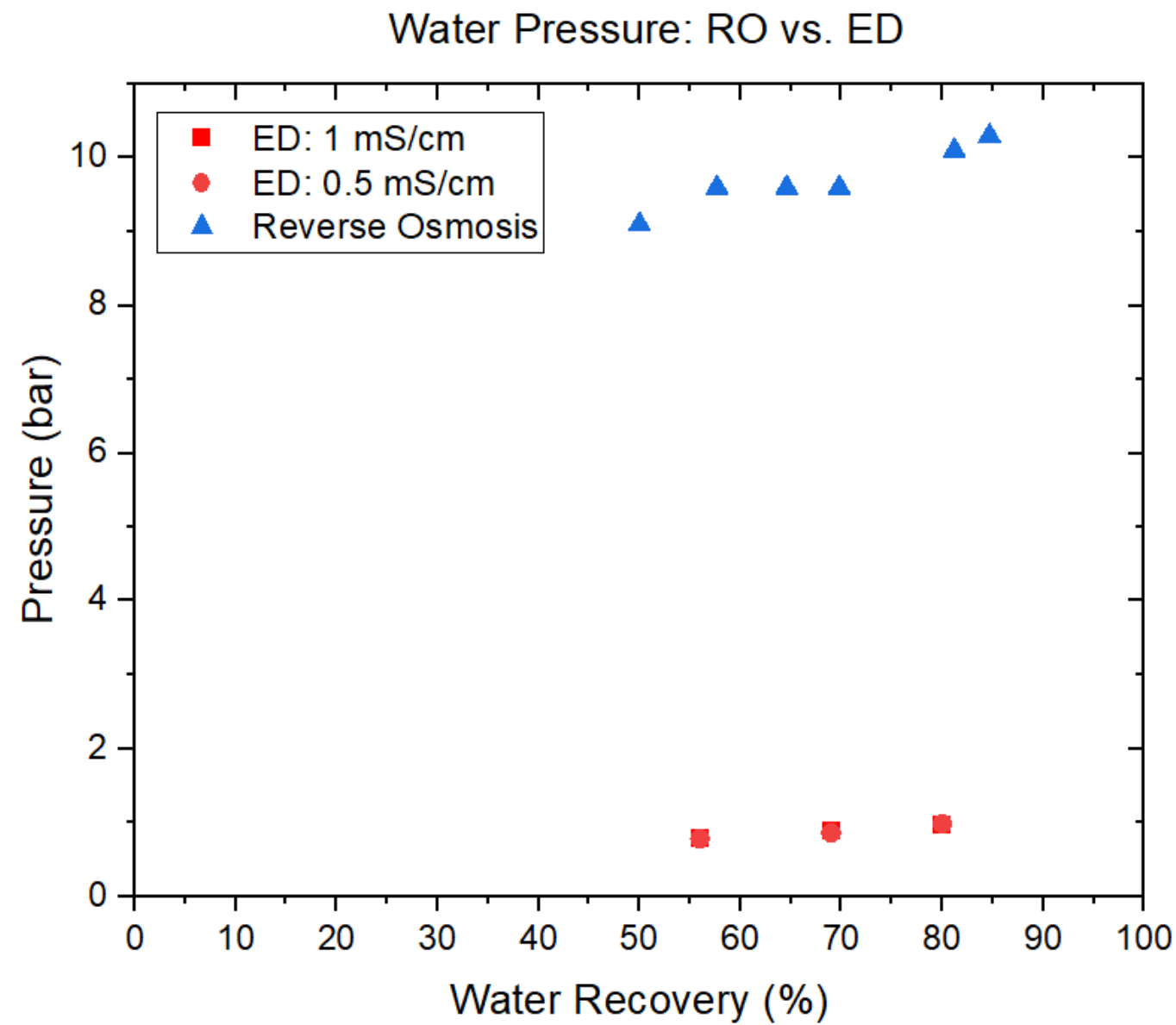
Initial Results – water recovery



Initial Results – ions in concentrate



Comparison with RO (model results)



Conclusions

- The diluate produced had acceptable irrigation water quality for greenhouse application
- Specific energy consumption per m³ water recovered is ~ factor 6 lower than RO at feed quality in greenhouses
- Electrodialysis is an effective nutrient concentration technology
- Additional treatment steps needed for complete valorization
- Further selective separation from concentrated stream with additional technologies (e.g. mono-selective electrodialysis, ion exchange or donnan dialysis)

Next Steps

- Larger scale pilot
- Economic analysis (LCA)
- Microbiological Risk Assessment – what additional treatment is required for water reuse
- Increase selectivity of separation



Thank you!

Joep van den Broeke & Tavishi Guleria

Joep.van.den.Broeke@kwrwater.nl

Tavishi.Guleria@kwrwater.nl



www.biorefine.eu



Twitter: #ESNI2023